

# MONTHLY MEMBERSHIP PROGRESS REPORT

LOCATION LOUISIANA

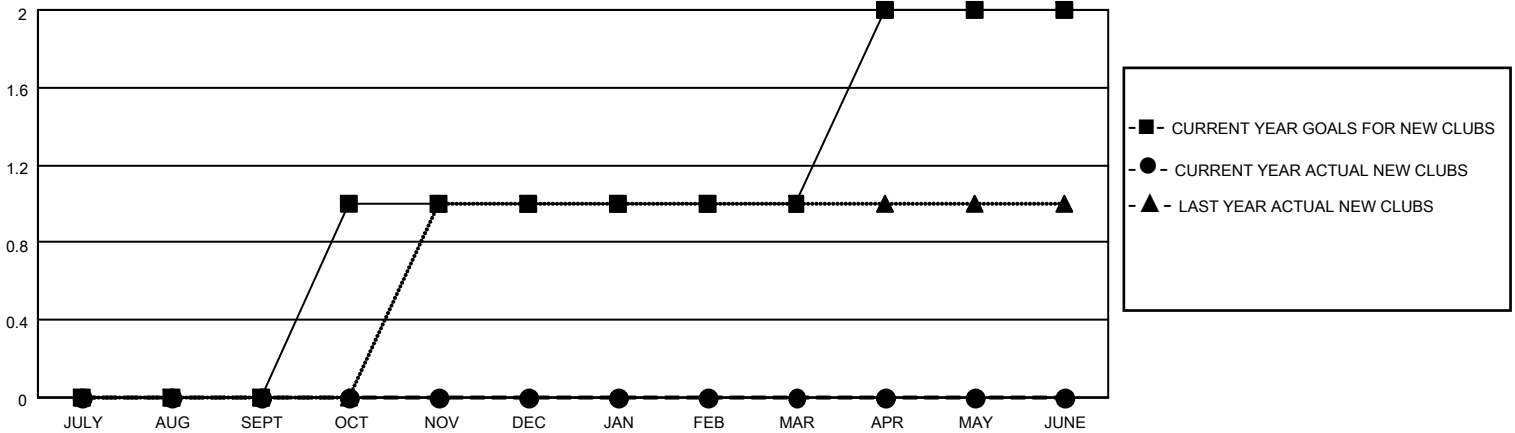
District 8 S

Results as of: 1/31/2022

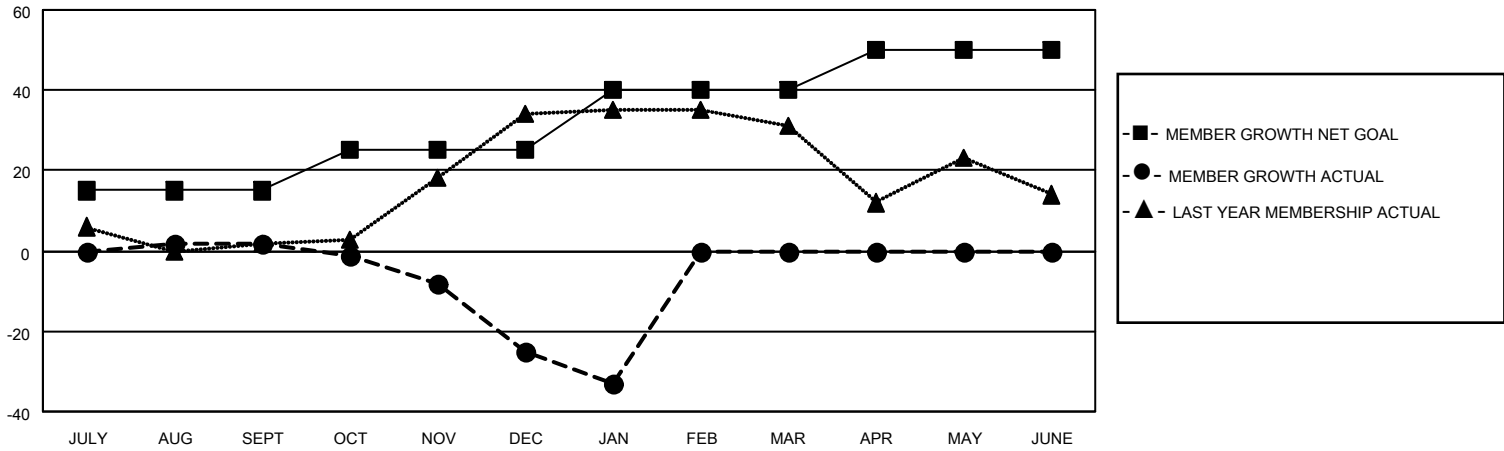
Clubs			
RESULTS FOR 2021-2022			
QUARTER	NEW CLUB GOAL	NEW CLUBS	DROPPED CLUBS
JULY/AUG/SEPT	0	0	1
OCT/NOV/DEC	1	0	1
JAN/FEB/MAR	0	0	0
APR/MAY/JUNE	1	0	0

Members			
RESULTS FOR 2021-2022			
QUARTER	MEMBER GROWTH NET GOAL	MEMBER GROWTH ACTUAL	DROPPED MEMBERS ACTUAL (including transfers)
JULY/AUG/SEPT	15	30	27
OCT/NOV/DEC	10	15	40
JAN/FEB/MAR	15	7	10
APR/MAY/JUNE	10	0	0

**GOALS AND ACTUAL NEW CLUBS CUMULATIVE**



**GOALS AND ACTUAL MEMBERS CUMULATIVE**



<b>DROPPED CLUBS: 2</b>	
<b>DROPPED MEMBERS</b>	
DECEASED	18
CLUB CANCELLED	25
OTHER	34
<b>TOTAL</b>	<b>77</b>

14 CLUBS OF 36 ADDED 1 OR MORE NEW MEMBERS

[CLICK HERE FOR CUMULATIVE MEMBERSHIP DATA](#)

<u>GENDER DISTRIBUTION</u>	
MALE	497 (53.44%)
FEMALE	433 (46.56%)
NON BINARY	0 (0.00%)
PREFER NOT TO ANSWER	0 (0.00%)
<b>TOTAL FAMILY UNIT MEMBERS</b>	<b>239</b>
<b>FAMILY MEMBERS PAYING HALF DUES</b>	<b>125</b>